

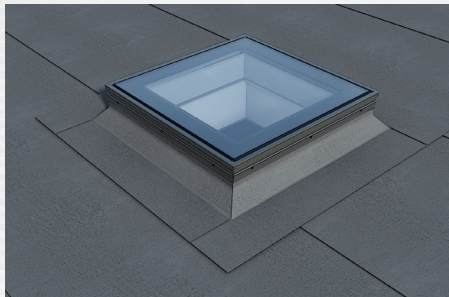


PGX A1

$U_w = 1,1 \text{ W/m}^2\text{K}$

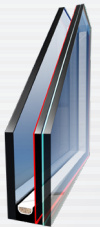
GLAZING UNIT

$U_g = 1,0 \text{ W/m}^2\text{K}$



GLAZING:

DOUBLE GLAZED UNIT
GAS - ARGON
WARM SPACER
LOW EMISSION COAT
TOUGHENED PANE
LAMINATED INNER PANE



PROFILE:

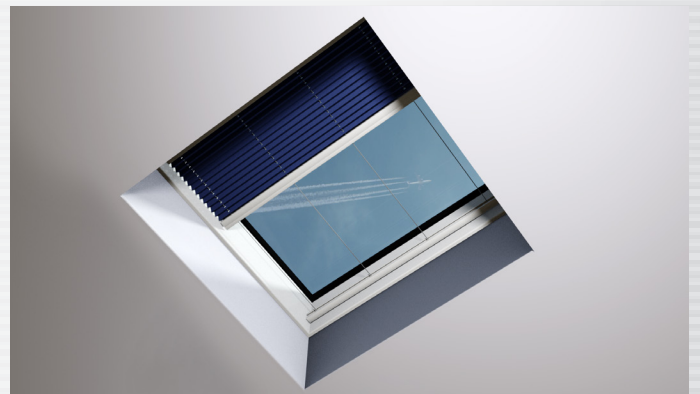
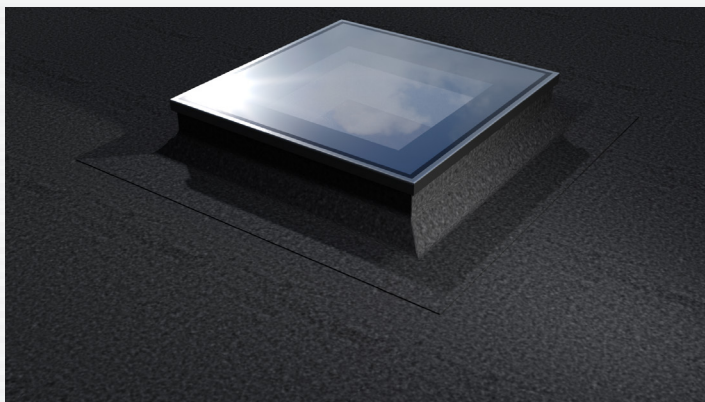
FOAM FILLED MULTI-CHAMBER
WHITE PVC PROFILES
RESISTANT TO INFLUENCE OF ATMOSPHERIC
FACTORS,
FILLED WITH POLYURETHANE FOAM
MAINTENANCE FREE



ROOF PITCH 2°-15°



NON-STANDARD SIZES AVAILABLE



STANDARD DIMENSIONS

dimension of the installation hole / aperture width x height [cm] size symbol	60x60 01P	60x90 02P	60x120 12P	70x70 03P	80x80 04P	90x90 05P	90x120 06P	100x100 07P	100x150 08P	120x120 09P	140x140 10P	120x220 11P
---	--------------	--------------	---------------	--------------	--------------	--------------	---------------	----------------	----------------	----------------	----------------	----------------