



FLAT ROOF WINDOW - NON OPENING

WITH LED

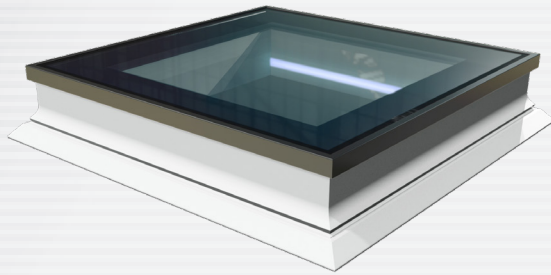


PGX A1 LED

$U_w = 1,1 \text{ W/m}^2\text{K}^*$

GLAZING UNIT

$U_g = 1,0 \text{ W/m}^2\text{K}$



GLAZING:

- one chamber
- gas - argon
- warm spacer
- low emission coat
- toughened pane
- external toughened pane

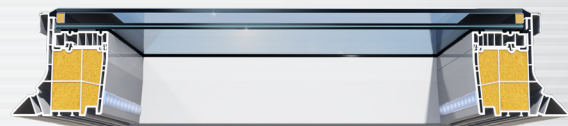
PROFILE:

- Foam filled multi-chamber
- White PVC profiles
- Resistant to influence of atmospheric factors Filled with the polyurethane foam
- Maintenance free
- Strip controller by remote control



Roof pitch 2°-15°

Non-standard sizes available



STANDARD DIMENSIONS

| dimension of the installation hole / aperture width x height [cm] size symbol | 60x60 01P | 90x60 02P | 120x60 12P | 70x70 03P | 80x80 04P | 90x90 05P | 120x90 06P | 100x100 07P | 150x100 08P | 120x120 09P | 140x140 10P | 220x120 11P |
|-------------------------------------------------------------------------------------|--------------|--------------|---------------|--------------|--------------|--------------|---------------|----------------|----------------|----------------|----------------|----------------|
| | | | | | | | | | | | | |

* U_w parameters for the reference sample according to norms: PL EN 1873 oraz norm EN ISO 10077-1 / EN ISO 10077-2.
 ** Warranty conditions set out in the warranty card available at www.okpol.com.